

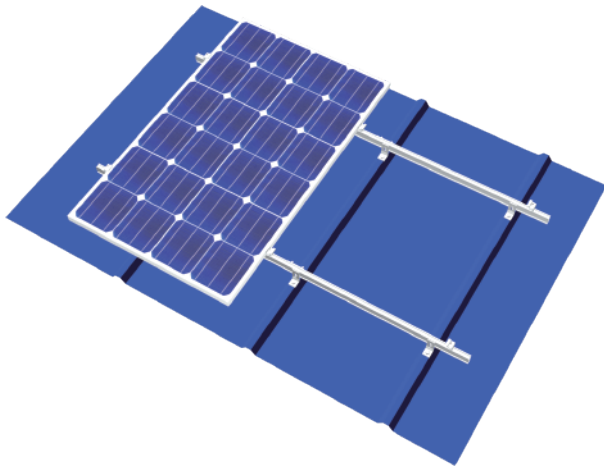


do My Best, to be the best!

**MIBET ENERGY**

# MRac DC H50 Rail Roof Solar PV Mounting System

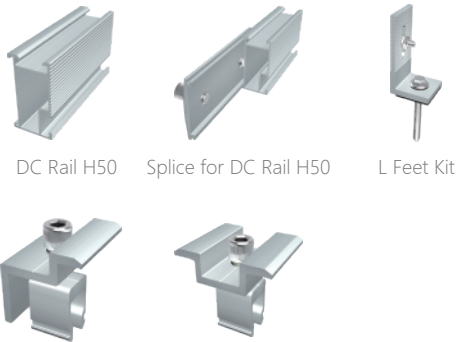
## Overview



MRac DC H50 Rail Roof Solar PV Mounting System is applied in most Corrugated Metal Roof commercial and industrial solar projects. The system can achieve stable and strong connection between the roof support structure and solar modules with modular patented design. The special designed tilt-in-nut can form fixed installation after tilt in the rail channel to protect the dropping of clamps to avoid possible damage to roofs and hurt to installers. Pre-assembled kits save the installation time and cost onsite.



## Components



DC Rail H50 Splice for DC Rail H50 L Feet Kit

End Clamp Kit (DC) U20 Inter Clamp Kit (DC)

## Features

- **Applicable to Different Roofs**  
Flexibly select different clamps according to the specific circumstance of each project, the DC Rail System is applicable to various types of roofs.
- **Save Installation Cost and Time**  
The unique design realizes easy installation and installation manual is provided.
- **Compatible to Different Types of Solar Modules**  
The DC Rail System is compatible with different types of solar modules, including 60-cell, 72-cell, framed or frameless modules.

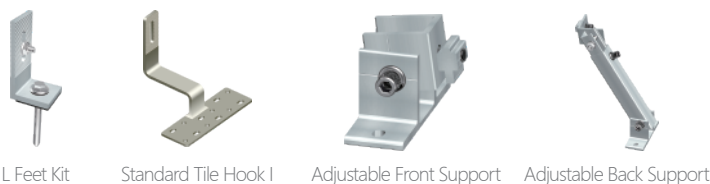
## Technical Parameter

System Name	DC Rail H50	Design Standard	AS/NZS 1170 , DIN 1055 , JIS C8955 : 2017 ,
Installation Site	Pitched Roof		International Building Code IBC 2009,
Foundation	Metal Roof, Tile Roof		California Building Code CBC 2010 ;
Tilt Angle	0-15°	Rail	Q235B (Hot-Dip Galvanized), Al6005-T5(Anodized)
Wind Load	60m/s	Fastener	SUS304 & Zinc-Nickel Alloy Electroplated Steel
Snow Load	1.6KN/M2	Small Components	Al6005-T5(Anodized)
Applicable Solar Module	Framed or Frameless	Color	Silver or Customized
Panel Layout	Landscape or Portrait	Warranty	10-Year Warranty

Certified by TUV, SGS and qualified consultants in AU, JP, ASEAN, CN, UK, EU, US



## Optional Accessories



L Feet Kit Standard Tile Hook I Adjustable Front Support Adjustable Back Support

